

New pedestrian bridge equipped with LaneLED INOX42

2-in-1: The handrail with integrated LED lighting

Customer/installation engineer:	Municipality of Martigny, Valloton Electricité (electrical installer), Martinetti (locksmith)
Requirement:	Safety and attractive design for the new pedestrian bridge
Solution:	hand rail LaneLED INOX42
Article:	LaneLED INOX42
Quantity:	100 m
Areas of application:	Terrace railing, underpasses and overpasses in railway stations, escape route and emergency staircases, decorative applications in office or exhibition wings, hotels and restaurants, staircases, private and public pathways

Starting situation

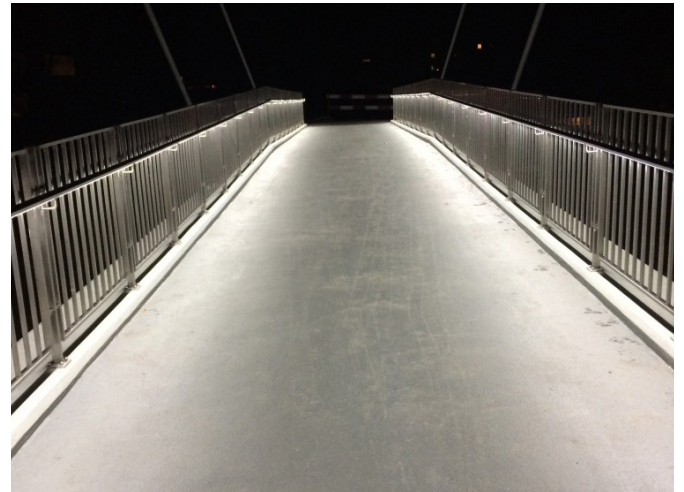
The two banks of the river Dranse were connected by a new footbridge.

The aim of the project was to create a safe and attractive railing system. By professional cooperation of the customer, locksmith and electrician this architecturally and electrotechnically great solution was developed.

Our LaneLED INOX42 handrail integrates perfectly into the railing and thus emphasizes the special architecture of the bridge even at night.

Customer benefits

- fall protection
- attractive accent lighting
- solid stainless steel execution in V4A
- durable high-quality component parts
- maintenance- and service-friendly



V0920